

© International Baccalaureate Organization 2021

All rights reserved. No part of this product may be reproduced in any form or by any electronic or mechanical means, including information storage and retrieval systems, without the prior written permission from the IB. Additionally, the license tied with this product prohibits use of any selected files or extracts from this product. Use by third parties, including but not limited to publishers, private teachers, tutoring or study services, preparatory schools, vendors operating curriculum mapping services or teacher resource digital platforms and app developers, whether fee-covered or not, is prohibited and is a criminal offense.

More information on how to request written permission in the form of a license can be obtained from <https://ibo.org/become-an-ib-school/ib-publishing/licensing/applying-for-a-license/>.

© Organisation du Baccalauréat International 2021

Tous droits réservés. Aucune partie de ce produit ne peut être reproduite sous quelque forme ni par quelque moyen que ce soit, électronique ou mécanique, y compris des systèmes de stockage et de récupération d'informations, sans l'autorisation écrite préalable de l'IB. De plus, la licence associée à ce produit interdit toute utilisation de tout fichier ou extrait sélectionné dans ce produit. L'utilisation par des tiers, y compris, sans toutefois s'y limiter, des éditeurs, des professeurs particuliers, des services de tutorat ou d'aide aux études, des établissements de préparation à l'enseignement supérieur, des fournisseurs de services de planification des programmes d'études, des gestionnaires de plateformes pédagogiques en ligne, et des développeurs d'applications, moyennant paiement ou non, est interdite et constitue une infraction pénale.

Pour plus d'informations sur la procédure à suivre pour obtenir une autorisation écrite sous la forme d'une licence, rendez-vous à l'adresse <https://ibo.org/become-an-ib-school/ib-publishing/licensing/applying-for-a-license/>.

© Organización del Bachillerato Internacional, 2021

Todos los derechos reservados. No se podrá reproducir ninguna parte de este producto de ninguna forma ni por ningún medio electrónico o mecánico, incluidos los sistemas de almacenamiento y recuperación de información, sin la previa autorización por escrito del IB. Además, la licencia vinculada a este producto prohíbe el uso de todo archivo o fragmento seleccionado de este producto. El uso por parte de terceros —lo que incluye, a título enunciativo, editoriales, profesores particulares, servicios de apoyo académico o ayuda para el estudio, colegios preparatorios, desarrolladores de aplicaciones y entidades que presten servicios de planificación curricular u ofrezcan recursos para docentes mediante plataformas digitales—, ya sea incluido en tasas o no, está prohibido y constituye un delito.

En este enlace encontrará más información sobre cómo solicitar una autorización por escrito en forma de licencia: <https://ibo.org/become-an-ib-school/ib-publishing/licensing/applying-for-a-license/>.

**Geography**  
**Higher level and standard level**  
**Paper 1 – resource booklet**

Friday 5 November 2021 (afternoon)

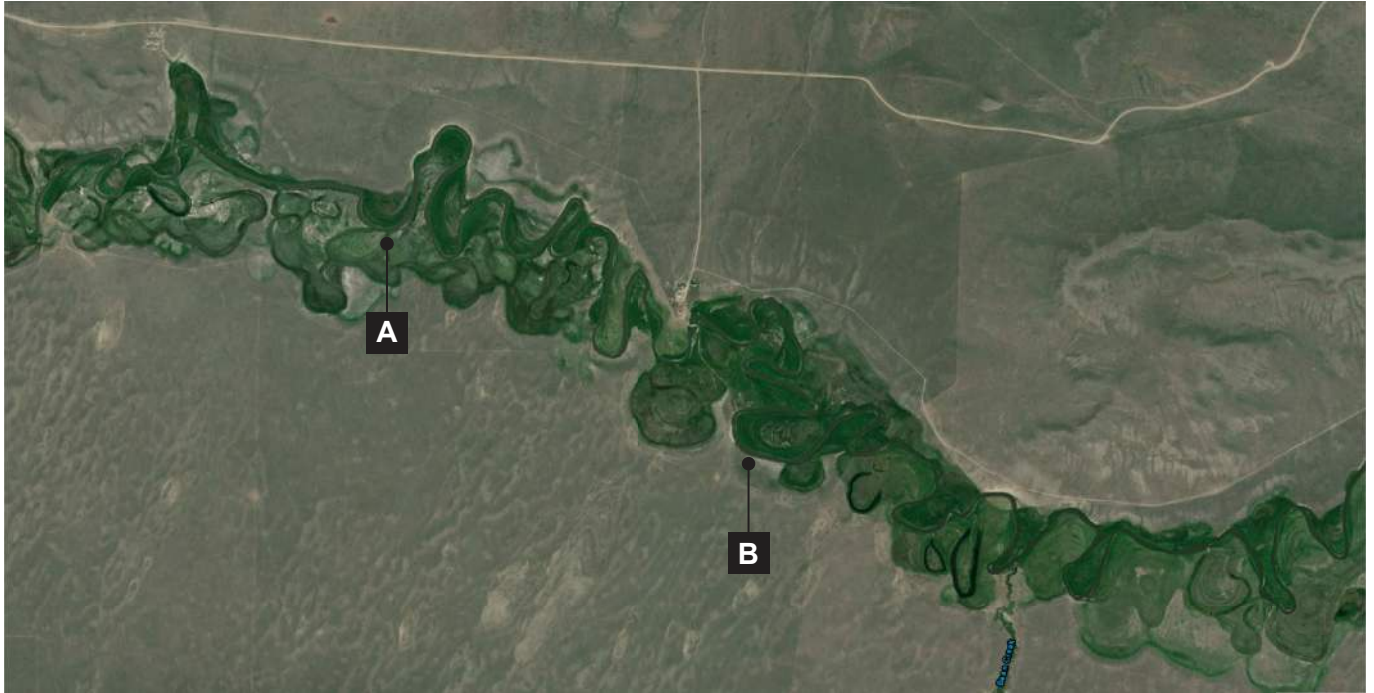
---

**Instructions to candidates**

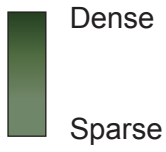
- Do not open this booklet until instructed to do so.
- This booklet accompanies paper 1.

**Option A — Freshwater**

1. The satellite image shows part of the Red Rock River in Montana, USA.

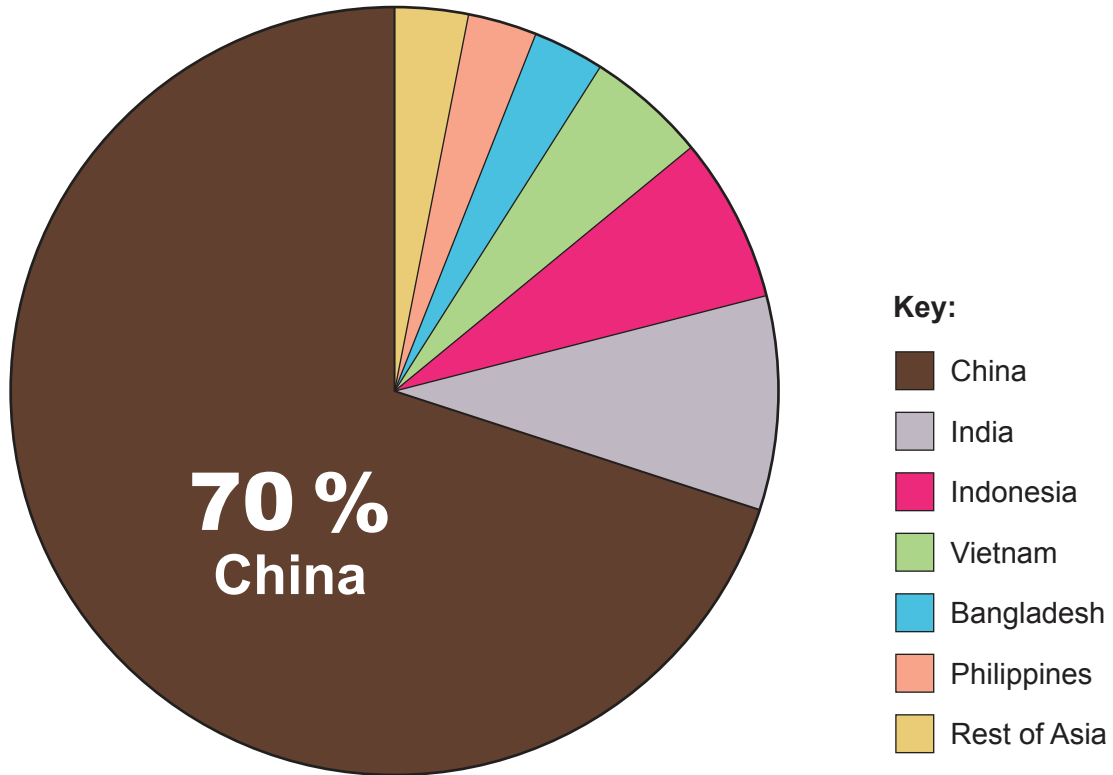


**Key: Vegetation**



**Option B — Oceans and coastal margins**

3. The pie chart shows the aquaculture production of Asia, by country, in 2016.

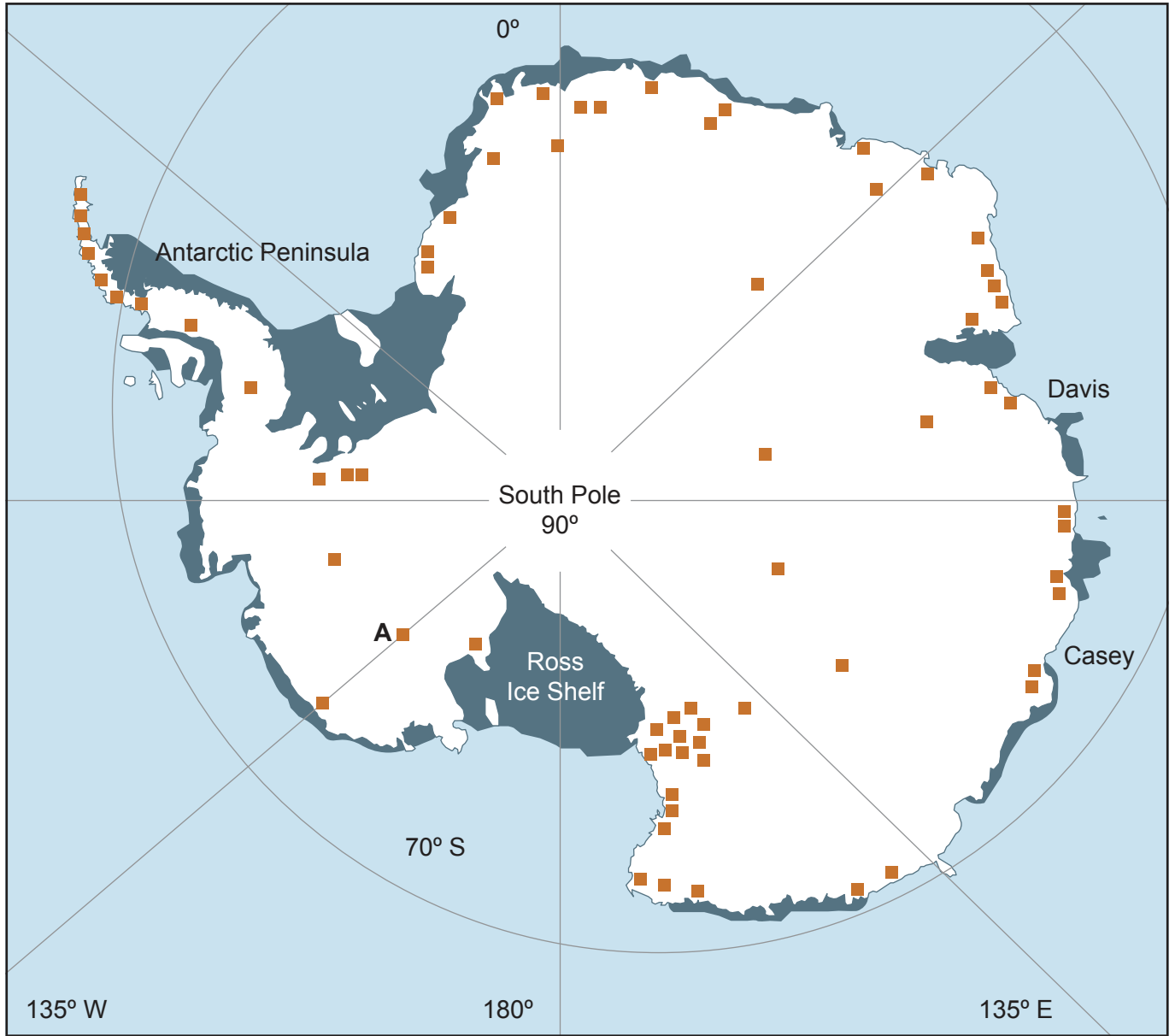


Total for the whole of Asia: 80 million tonnes

Turn over

**Option C — Extreme environments**

5. The map shows the distribution of buildings on the continent of Antarctica.



**Scale:**

0 1000 km

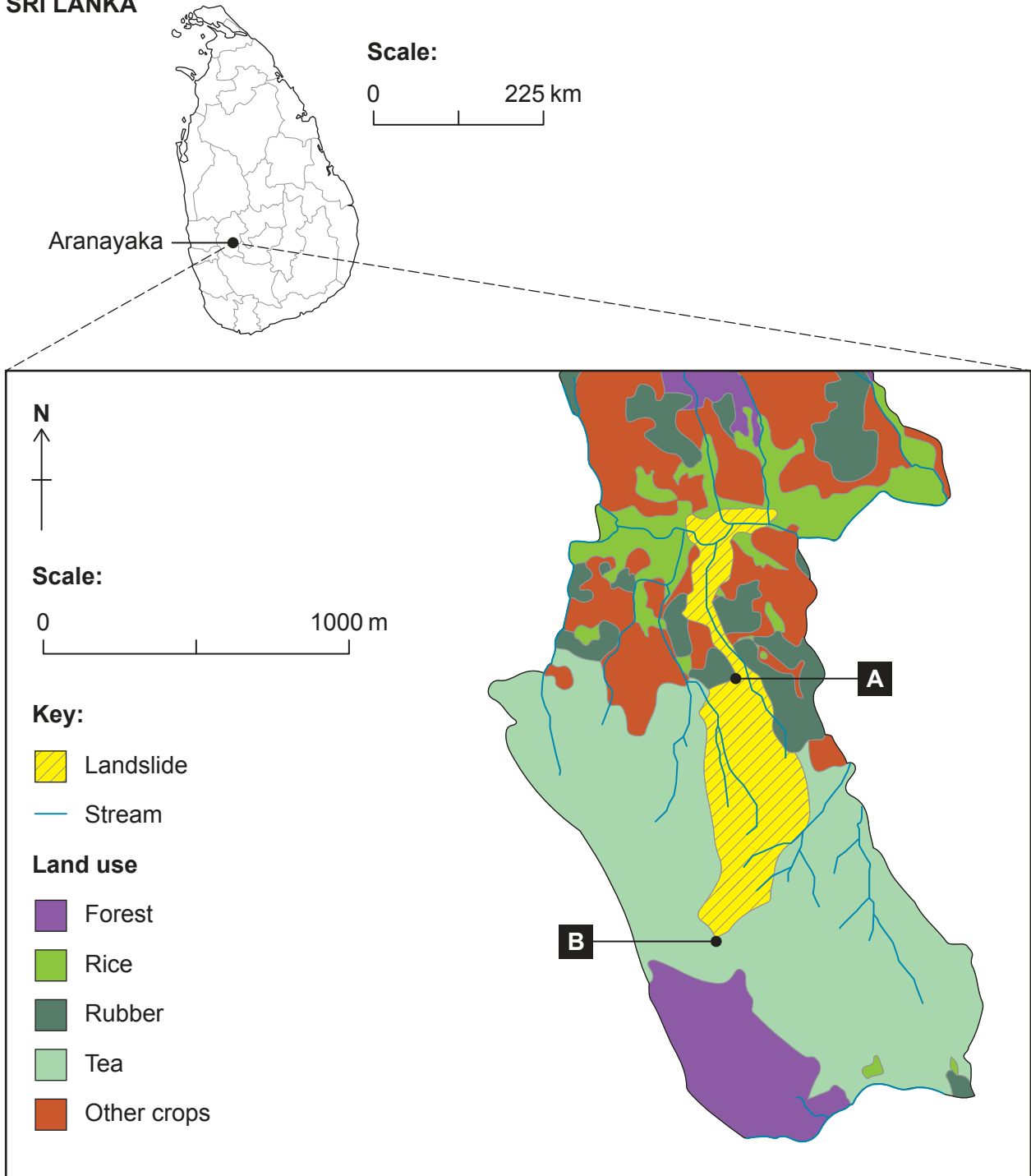
**Key:**

-  Building
-  Ice shelf
-  Ocean

**Option D — Geophysical hazards**

7. The map shows the land use of areas affected by a landslide in a mountainous region of an Asian country with heavy seasonal rainfall.

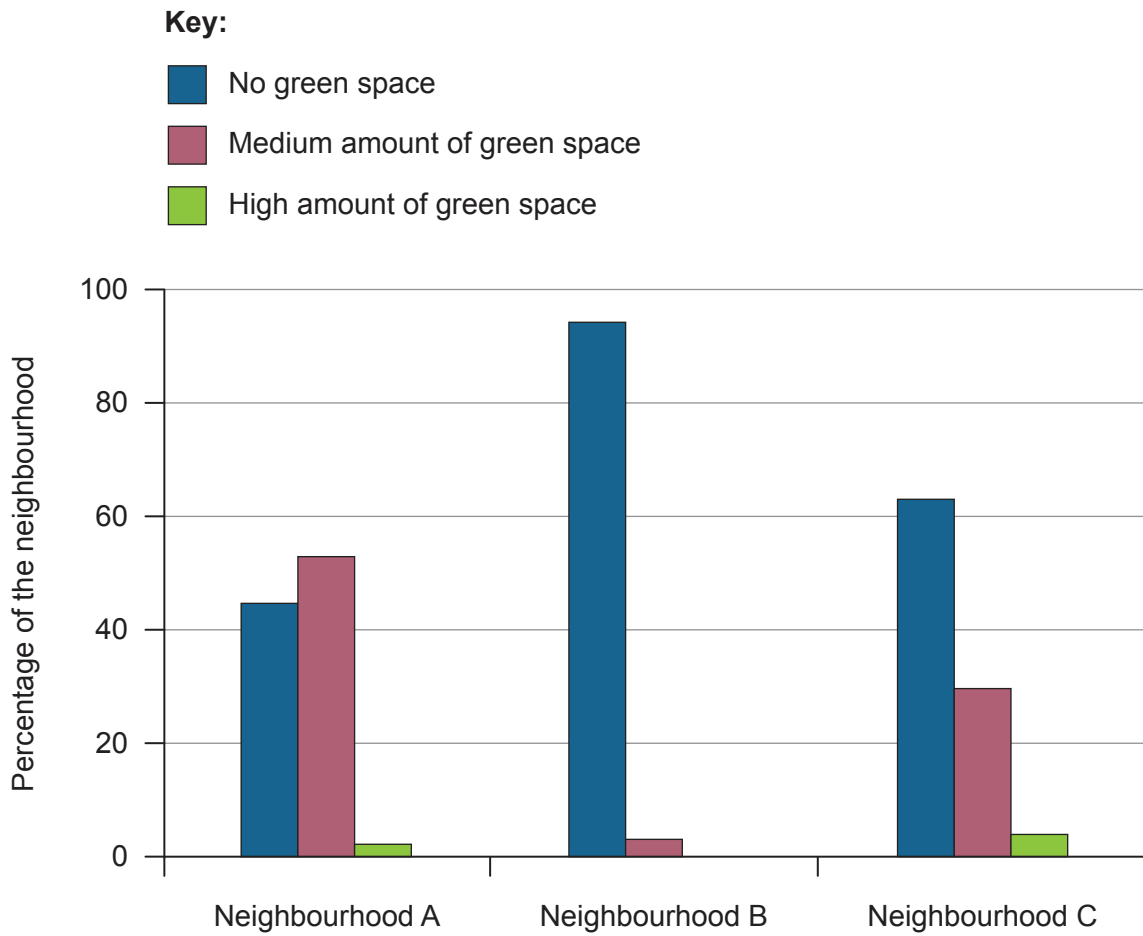
**SRI LANKA**



Turn over

**Option G — Urban environments**

13. The graph shows how much green space remains in the streets of three neighbourhoods in a large city.



## References:

1. U.S. Geological Survey, n.d. Site map for Montana. [online] Available at: [https://waterdata.usgs.gov/mt/nwis/nwismap/?site\\_no=06011500&agency\\_cd=USGS](https://waterdata.usgs.gov/mt/nwis/nwismap/?site_no=06011500&agency_cd=USGS) [Accessed 1 October 2020]. Source adapted.
5. Brooks, S. T., Jabour, J., Van den Hoff, J. and Bergstrom, D. M., 2019. Our footprint on Antarctica competes with nature for rare ice-free land. *Nature Sustainability*. [online]. Available at: [https://www.researchgate.net/figure/Distribution-of-building-footprint-on-Antarctica-a-The-distribution-and-density-of\\_fig1\\_331506395](https://www.researchgate.net/figure/Distribution-of-building-footprint-on-Antarctica-a-The-distribution-and-density-of_fig1_331506395) [Accessed 1 October 2020]. Source adapted.
7. Perera, E. N. C., Jayawardana, D. T., Jayasinghe, P., Bandara, R. M. S. and Alahakoon, N., 2018. Direct impacts of landslides on socio-economic systems: a case study from Aranayake, Sri Lanka. *Geoenvironmental Disasters*, 5(11), p.3. Source adapted. <https://geoenvironmental-disasters.springeropen.com/articles/10.1186/s40677-018-0104-6#rightslink> Attribution 4.0 International (CC BY 4.0) <http://creativecommons.org/licenses/by/4.0/>.
13. ONS, 2018. How green is your street? [online] Available at: <https://www.ons.gov.uk/economy/environmentalaccounts/articles/howgreenisyourstreet/2018-11-19> [Accessed 1 October 2020]. Source adapted.

All other texts, graphics and illustrations © International Baccalaureate Organization 2021